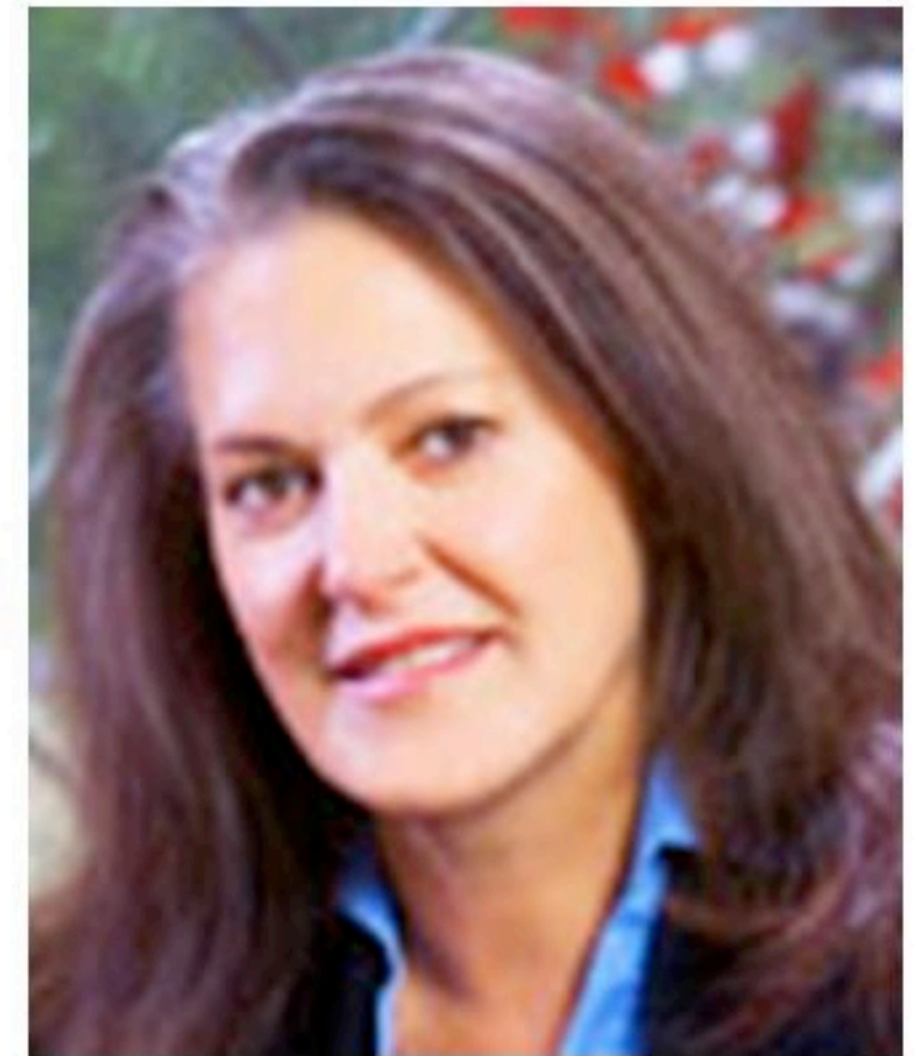


California State University, Long Beach Jewish Studies Program
The Alpert Jewish Community Center, and The Jewish
Federation of Greater Long Beach & West Orange County

Spiritual Care at the End of Life



February 23, at 7:30 pm

Rabbi Carla Howard

**Founder and Executive Director of the
Jewish Healing Center, Los Angeles**

The lecture will be held at the Alpert JCC
3801 E. Willow St., Long Beach, CA 90815



JEWISH FEDERATION
GREATER LONG BEACH & WEST ORANGE COUNTY



For further information please contact:
Jeffrey Blutinger, Barbara and Ray Alpert Endowed Chair in Jewish Studies
at (562) 985-2196 or via e-mail at Jeffrey.Blutinger@csulb.edu